

7 The Old Glassworks, Chester Street, Shrewsbury, SY1 2DR
£1,050 Per Month



7 The Old Glassworks, Chester Street, Shrewsbury, SY1 2DR

£1,050 Per Month

VIRTUAL TOUR AVAILABLE - Superb recently built two bedroom duplex apartment with views over the River Severn and walking distance to Shrewsbury town centre and railway station. Part of a luxury, small scale re-development of a former church which now comprises nine individually designed apartments. Includes allocated parking for one car, lift access and private basement storage.

Available: 05/03/2026

Description

Comprising: Attractive communal entrance hall with video intercom, lift access to upper floors and stairs down to basement storage. Private entrance to first floor apartment, hallway including cloakroom with WC and store cupboard, living & dining space, stylish fitted kitchen with stone worktops and integrated appliances. Staircase to second floor, master bedroom including contemporary fitted wardrobes, further double bedroom including fitted wardrobes and bathroom including shower. Gas central heating, double glazing, allocated parking for one car in secure car park. EPC B



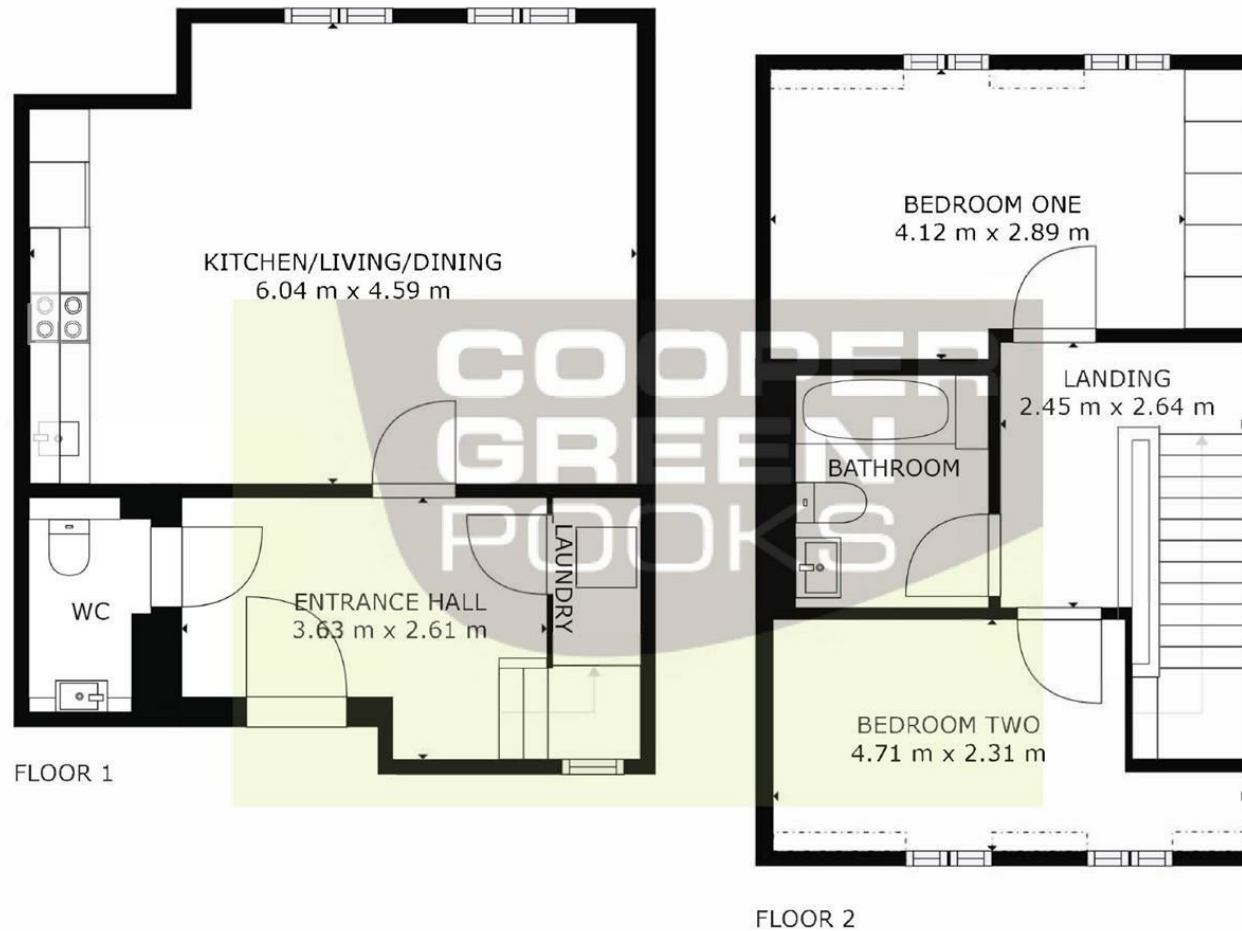
Unfurnished

Council Tax Band: C

Available: 5th March 2026

EPC: B

Floor Plans



GROSS INTERNAL AREA
FLOOR 1: 41 m², FLOOR 2: 35 m²
EXCLUDED AREAS: , REDUCED HEADROOM BELOW 1.5M: 1 m²
TOTAL: 76 m²
SIZES AND DIMENSIONS ARE APPROXIMATE, ACTUAL MAY VARY.



These particulars, whilst believed to be accurate are set out as a general outline only for guidance and do not constitute any part of an offer or contract. Intending purchasers should not rely on them as statements of representation of fact, but must satisfy themselves by inspection or otherwise as to their accuracy. No person in this firm's employment has the authority to make or give any representation or warranty in respect of the property.